

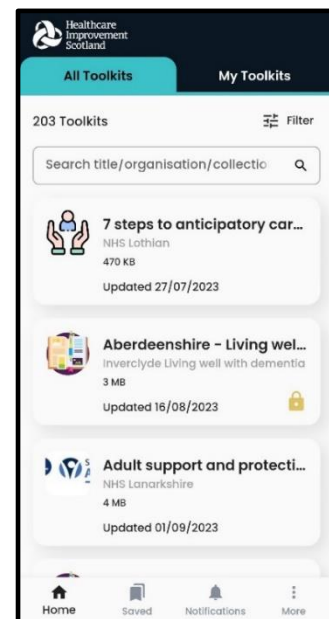
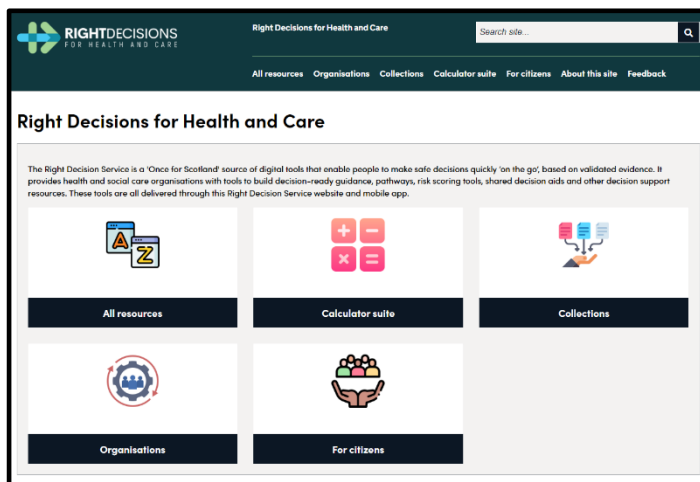
# The Right Decision Service (RDS)

‘Once for Scotland’ digital tools for health & care staff and citizens

The Right Decision Service is the national decision support service for Scotland’s health and social care. It is a national source of digital tools which put evidence into the hands of staff and citizens. Resources are available as web and mobile apps, and are embedded in electronic care systems.

Find us at

<https://rightdecisions.scot.nhs.uk/>



## Download the Right Decisions app for Android or iOS



[Apple app](#)



[Android App](#)

*“The RDS app has been cited as an easy to use and valuable tool during the management of adverse events.”*

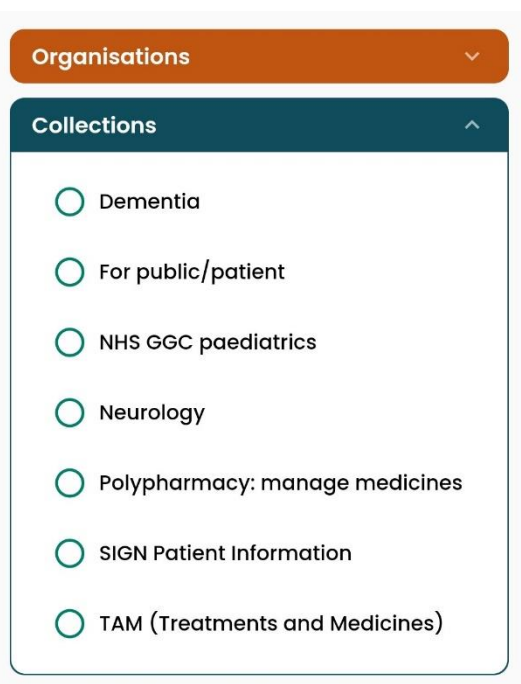
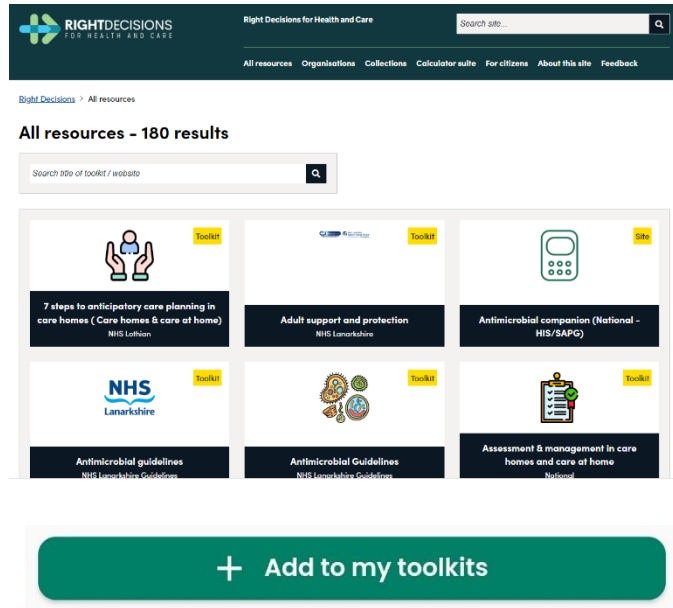
*“...this is the realisation of the quest for a single portal of information;”.... “ A game changing clinical calculator tool ”*

*“...having guidance (in the Adult Support and Protection app) to hand for staff is great when they are out in the community.”*

## How to navigate the RDS

The 'All resources' section on the web or 'All Toolkits' section on the app will show you a list of all toolkits in alphabetical order. You can also filter resources or search for a specific toolkit using the search bar.

On the app you can save toolkits to the 'My Toolkits' section for easy access. Tap on the toolkit of your choice, then select 'Add to my toolkits'.



## Collections & organisations

Collections are useful for finding groups of toolkits on a topic of interest. They enable you to filter by topics such as condition or disease.

The Organisations option allows you filter by specific health boards or other organisations. Both collections and organisations can be accessed from the homepage on the web, or via the 'Filter' tab on mobile.

## For citizens

Toolkits designed specifically for the public can be accessed from the 'For citizens' tab on the RDS website. On the app, the view is limited to these toolkits when you set your user mode to 'Public/Patient'

## Calculators

The 'Calculator suite' tab on the RDS website provides access to various clinical calculators, including screening, diagnostic, and risk predication tools. On the app, calculators can be accessed from the Calculator suite collection.